

# USF-IFAAS

## FLORIDA INSTITUTE OF FORENSIC ANTHROPOLOGY & APPLIED SCIENCE

### USF-FORT (FACILITY FOR OUTDOOR TRAINING & RESEARCH)

4202 E. FOWLER AVE. SOC 100, TAMPA, FL. 33620

---



Welcome! The following packet has basic information for parking, suggested hotels near or on USF campus, directions to the location of our forensic anthropology laboratory and/or outdoor research facility, and accompanying classrooms for our upcoming workshops/conferences.

#### **Personnel Contacts for questions:**

Erin H. Kimmerle, PhD.: Director of IFAAS, Associate Professor at USF

- ([kimmerle@usf.edu](mailto:kimmerle@usf.edu)) cell: (813) 748-3304

Liotta N. Dowdy, M.A.: Education Program Coordinator, Isotope Coordinator

- ([liottan@usf.edu](mailto:liottan@usf.edu)) cell: (410) 908-1538

USF Forensic Anthropology Laboratory: Room SOC 21, Lab phone: (813) 974-4219

- Kelsee Hentschel-Fey, M.A. : Lab Manager ([khentschel@usf.edu](mailto:khentschel@usf.edu))
- Gennifer Goad Ebanks, M.A. : Body Donation Coordinator ([gmgoad@usf.edu](mailto:gmgoad@usf.edu))

#### **Directions to the Lab/Classroom on USF Tampa Campus:**

University of South Florida, Fl. Institute of Forensic Anthropology and Applied Sciences (IFAAS)-Forensic Anthropology Lab: Social Sciences Building (SOC)

- We are located on the ground level (basement) at the southeast corner of the SOC building, room #21. There are stairs at each corner of the building or the elevator is located to the right of the main Anthropology Dept. office. Our teaching osteology lab is located at SOC 125 (1<sup>st</sup> floor).
- **Directions** from E. Fowler Ave. (main entrance into campus): As you enter the campus from Leroy Collins Blvd., make a right turn at the first light onto USF Alumni Drive. Then turn left at USF Maple Drive (on map), but it has been renamed to Genshaft Drive. After the second speed bump/pedestrian walk way, the Social Sciences building (SOC) will be located to your left.
- **Parking:** There is meter parking to your right in the parking lot next to the CWY building. However, best option is an all-day visitor parking pass can also be purchased at the campus information center located at the main entrance on Leroy Collins Blvd. as you enter the campus. This can also be purchased in advance online: They will also supply a map for the designated visitor parking lots for the day.

### **Directions to the USF-FORT in Land-O-Lakes:**

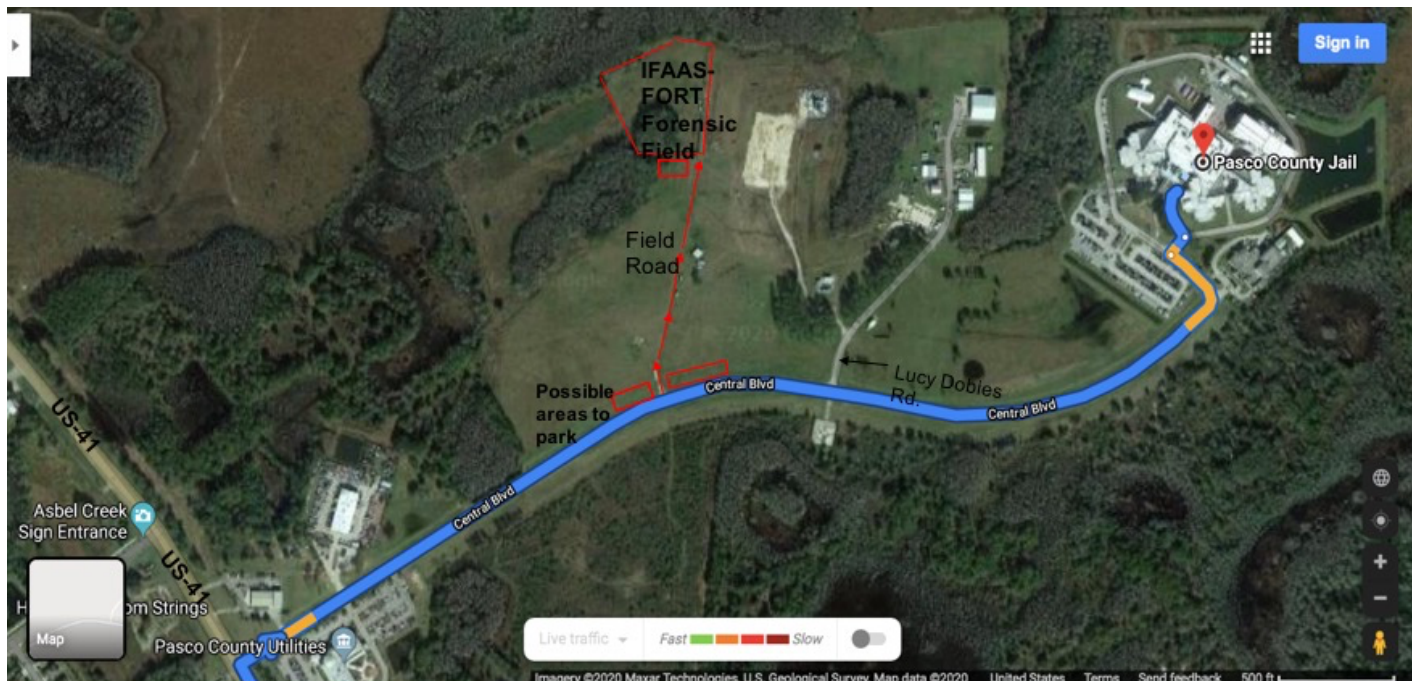
*USF-FORT, Central Blvd. Land O'Lakes, FL. 34637*

- It is best to input the address for the Pasco County Jail, 20101 Central Blvd, Land O' Lakes, FL 34637 if you wish to use Google Maps or a GPS device.

### **Directions from the USF Tampa campus:**

**(4202 E. Fowler Ave or from Fletcher Ave)**

- Drive towards Bruce B. Downs Blvd and turn right onto Bruce B. Downs Blvd.
- Turn left onto E. Bearss Ave
- Turn right onto US-41 Business/North Florida Ave (heading north) and (~17.9 miles/27 mins.)
- Turn right onto Central Blvd (Pasco County Utilities building will be on your right side at the corner of US-41 and Central Blvd.)
- Entrance for the forensic field road will be on your left (~ ¼ mile or less), it is not marked but there is padlocked gate. We will meet at the gate and if you are driving in separately, you will be able to follow us into the gate.
- Depending on the climate conditions and/or if there was previous rain the weekend prior to Jan. 24, 2022, (*for the Adv. Buried Body Excavation Workshop*) we may have you park at the gate on Central Blvd. and walk to the forensic field. However, if the conditions are dry it may be possible to drive in and park right out the fence of the forensic training field. This will be decided on Monday, Jan. 24<sup>th</sup>.)



## **Hotels:**

### **Embassy Suites on USF Campus:**

[https://embassysuites3.hilton.com/en/hotels/florida/embassy-suites-by-hilton-tampa-usf-near-busch-gardens-TPAFRES/index.html?SEO\\_id=GMB-ES-TPAFRES](https://embassysuites3.hilton.com/en/hotels/florida/embassy-suites-by-hilton-tampa-usf-near-busch-gardens-TPAFRES/index.html?SEO_id=GMB-ES-TPAFRES)

- Guests and/or participants of USF events/courses have a discounted rate if they wish to stay at the Embassy Suites on the USF campus. To reserve your stay on-line, go to website and select the dates you would like to reserve your stay. Afterwards, you will fill in other pertinent information but before you pay on-line I was instructed you need to type in under the group code box, (P25), and the discounted rate will be \$109.00 plus tax per night.
- Their sales representative had also said if this didn't process correctly on-line, another option is to call the front desk and give them your reservation requests over the phone and to mention you have the USF group code: P25.

### **La Quinta Inn & Suites by Wyndham USF:**

Less than half mile from campus, approximately 5-minute drive to campus.

[https://www.wyndhamhotels.com/laquinta/tampa-florida/la-quinta-usf-near-busch-gardens/overview?iata=03717490&iata=00093763&cid=PS:LQ:20190403:GGL:TM:LQ:US:NA:NA:EN-US&userid=338ed62a-c152-468f-a0a2-4b978c8de15d&gclid=EA1aIQobChMIjpeGzMem5gIVxcDACH2X3QvEEAAYAiAAEgLrr\\_D\\_BwE](https://www.wyndhamhotels.com/laquinta/tampa-florida/la-quinta-usf-near-busch-gardens/overview?iata=03717490&iata=00093763&cid=PS:LQ:20190403:GGL:TM:LQ:US:NA:NA:EN-US&userid=338ed62a-c152-468f-a0a2-4b978c8de15d&gclid=EA1aIQobChMIjpeGzMem5gIVxcDACH2X3QvEEAAYAiAAEgLrr_D_BwE)

### **Hyatt Place Tampa, Busch Gardens:**

Less than half mile from campus, approximately 5-minute drive to campus.

<https://www.hyatt.com/en-US/hotel/florida/hyatt-place-tampa-busch-gardens/tpazb>

### **Hilton Garden Inn, (North Busch Gardens) Tampa**

13305 Tampa Oaks Blvd, Tampa, FL, 33637

4.5 miles from USF campus, 10-minute drive to USF campus

[https://www.hilton.com/en/hotels/tpanhgi-hilton-garden-inn-tampa-north/?SEO\\_id=GMB-GI-TPANHGI&y\\_source=1\\_MjA4MjI4OC03MTUtbG9jYXRpb24uZ29vZ2xlX3dlYnNpdGVf b3ZlcnJpZGU%3D](https://www.hilton.com/en/hotels/tpanhgi-hilton-garden-inn-tampa-north/?SEO_id=GMB-GI-TPANHGI&y_source=1_MjA4MjI4OC03MTUtbG9jYXRpb24uZ29vZ2xlX3dlYnNpdGVf b3ZlcnJpZGU%3D)

### **Home2 Suites by Hilton Tampa USF near Busch Gardens**

11606 Malcolm McKinley Drive, Tampa, FL, 33620

Less than half mile from campus, approximately 5-minute drive to campus.

[https://www.hilton.com/en/book/reservation/rooms/?ctyhocn=TPASFHT&arrivalDate=2021-11-14&departureDate=2021-11-19&room1NumAdults=1&brandCode=HT&inputModule=HOTEL\\_SEARCH&ohwDeepLinking=true](https://www.hilton.com/en/book/reservation/rooms/?ctyhocn=TPASFHT&arrivalDate=2021-11-14&departureDate=2021-11-19&room1NumAdults=1&brandCode=HT&inputModule=HOTEL_SEARCH&ohwDeepLinking=true)